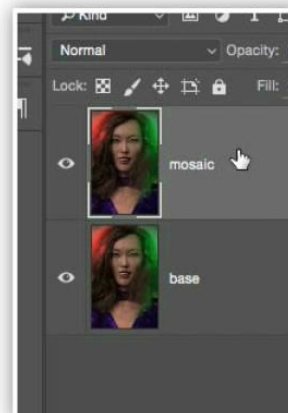
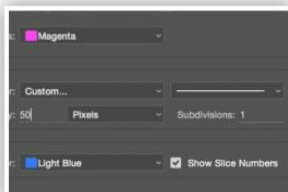
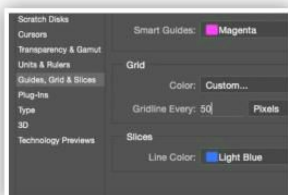
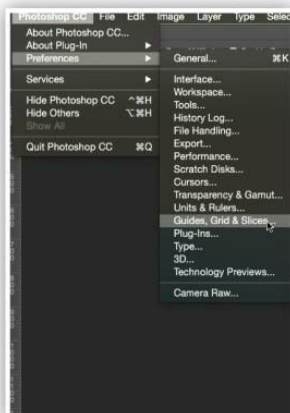


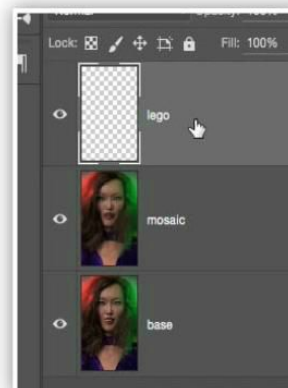
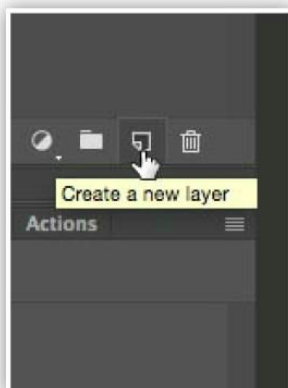
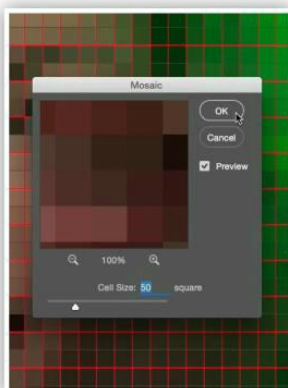
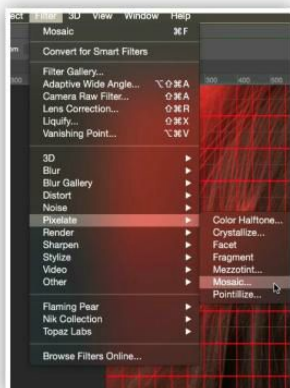


PHOTO EDITING PROJECTS ■ LEGO PORTRAITS



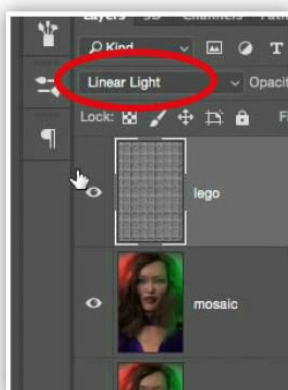
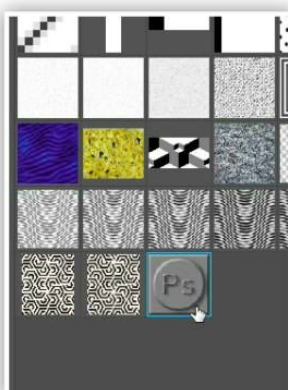
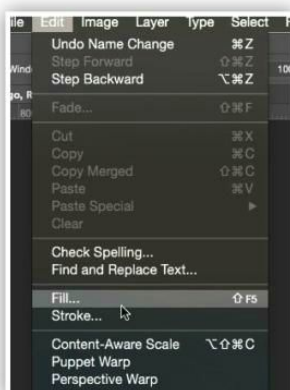
15 It's not essential but is useful to get in the habit of setting up guides. If you go to your main Photoshop menu and choose Preferences > Subdivisions, Grids & Slices and make Gridline Every 50 Pixels and make Subdivisions 1. Click OK when ready.

16 Now we can turn on the grid. Go to View > Show > Grid (Cmd + '). Horizontal and vertical gridlines, 50 pixels apart, will be overlaid on to your image. Make sure that the base layer is active, then press Cmd + J to make a duplicate. Call this new layer 'mosaic'.



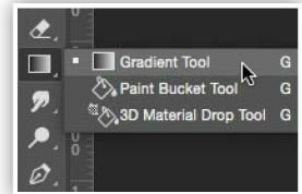
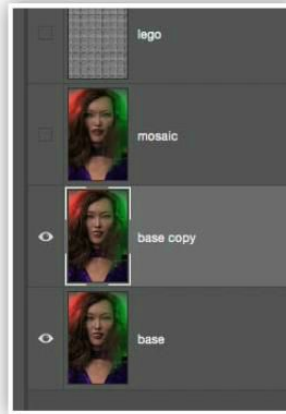
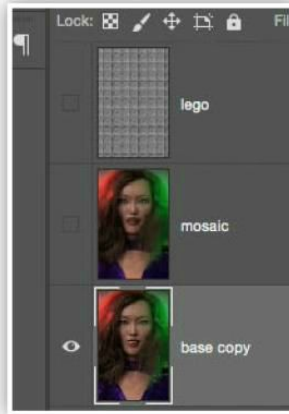
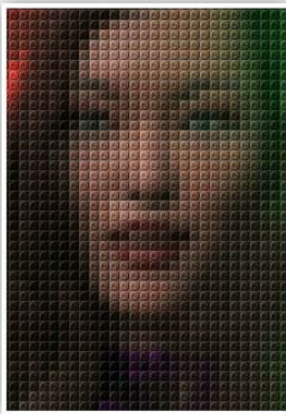
17 With the 'mosaic' layer active, go to Filter > Pixelate > Mosaic to bring up the Mosaic dialog box. Set your Cell size to 50 and click OK. We are simplifying the image so one block of colour in the portrait will match one Lego block, when it's applied.

18 Click on the Create a new layer button to add another layer. A new layer will appear above the 'mosaic' layer. Call this one 'lego'. This is where we'll apply our block pattern. Make sure the 'lego' layer is active.



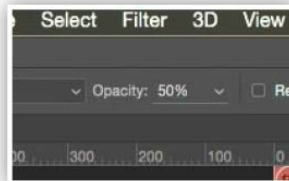
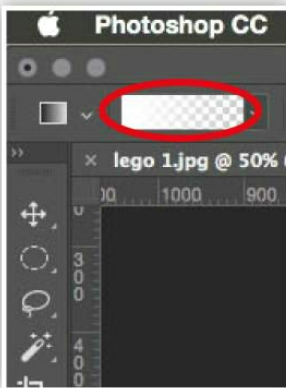
19 Next, you need to go to Edit > Fill (Shift + F5) to call up the Fill dialog box. Choose Pattern from the Contents list and under Custom Pattern, you can choose your Lego pattern created earlier. Click on your pattern and then click OK to proceed.

20 The 'lego' layer is now filled with the brick pattern. Go to the Blend Mode menu and select Linear Light. When you do, the bricks will be blended into the mosaic pattern on the layer below. You see how the bricks match the mosaic blocks exactly.



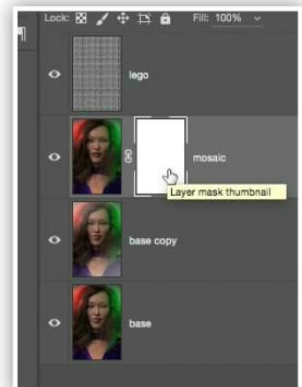
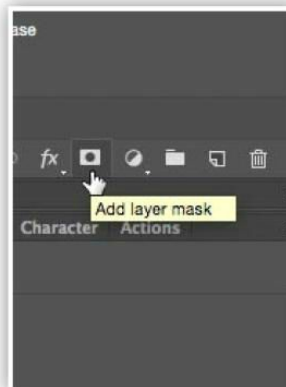
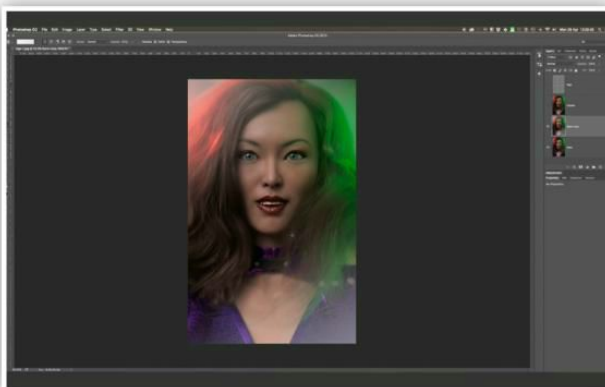
21 At this point, if you press Cmd + ' to turn off your grid, you will see the image more clearly. We could happily call this done but there is a little more we can do to enhance it further. For the moment, temporarily hide the 'lego' and 'mosaic' layers.

22 Click on the 'base' layer to activate it and press Cmd + J to duplicate it. With 'base copy' active, press G to choose your Gradient Tool and make sure your foreground colour is set to white.



23 Click the Gradient context menu at the top to open the Gradient Editor and choose the Foreground to Transparent preset. Click OK then set the Gradient Fill Opacity to 50 per cent. Make sure the 'base copy' layer is active so we can apply our gradient.

24 Click and hold the left mouse button outside the document in the top left corner and drag the cursor towards the bottom right corner, just over half way. When you let go, a white gradient will be applied. Repeat this process from the bottom right corner.



25 Now we have a nice sheen on our 'base copy' layer that will help differentiate it from the 'mosaic' layer above; its use will become clearer in the following stages.

26 Make the 'lego' and 'mosaic' layers visible again and then make sure the 'mosaic' layer is active. Click on the Add layer mask button and that will be added to the 'mosaic' layer.